

Adelaide Walker LLP

Fibres to inspire artists and makers

Tel: 01943 830600 Addingham, West Yorkshire, LS29 0PD

Email: enquiries@adelaidewalker.co.uk

www.adelaidewalker.co.uk

NOTE—The felting needles have special barbs on them that tangle the wool together as you work. These needles are very sharp and should be used with care, when not in use store in the container provided. The needle should leave the wool at the same angle as it entered, don't wiggle it around or it will break.

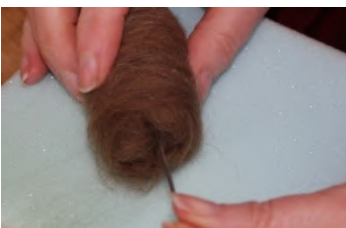
Don't worry if you have a little fibre left at the end : you should have a little spare.



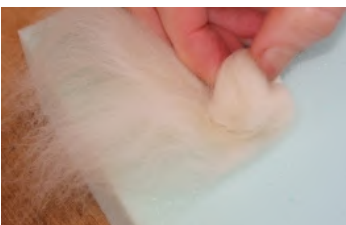
Begin by pulling off a length of the grey wool about 1inch in width and setting it aside.



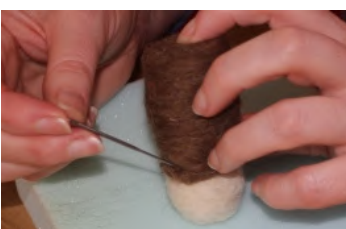
Body: Take the larger amount of grey and roll the piece up into a cylinder. The more tightly you roll the less needling you'll need to do and whatever you do, don't let go or it'll unwind.



Keeping your needle steady and using a stabbing motion, needle the wool into a roughly cylindrical shape for the body. Flatten off the bottom and make sure it will stand up. It should feel quite firm but not hard.



Head: Take a length of the white wool about 4" long. Roll it into a ball shape and needle it until it's firm. Check it against the body to see if it's the right size. If it's too small, add more wool and if it's too large keep needling until it's smaller.



Join the head to the body by needling right through the head into the body. Needle from the body into the head as well, and keep going until the two pieces are firmly joined together. If you pick it up by the head it shouldn't feel as though it's going to come off.



Arms: Split your remaining grey wool into two pieces, one for each arm. Roll the piece up to form a sausage shape. Needle one end, leaving the other end soft, and needle the centre until firm. Keep turning it as you work so it stays in a sausage shape and isn't flattened.



Needle the soft end of the arm onto the body just where it joins the head. Needle the rest of the arm onto the body until it's firmly attached.



Repeat for the second arm and work around the edge of the arm to increase definition.



Hat Take half the purple wool and wrap it around the cocktail stick. Try and keep it on one half of the stick and form it into a cone shape.



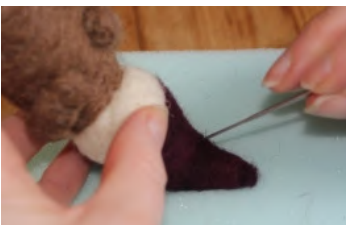
Keeping a very firm hold of the wool slide it off the stick. Make sure you get it all, not just the top layers, or it will unwrap. Place it on the head of the gnome and needle it into place.



Take some more of the purple wool and begin to build it up around the base of the hat



Bring the hat lower down at the back of the head.



The hat will be standing straight up. If you'd like it to bend over or to one side then turn the gnome upside down and bend the hat as you'd like it to be. Needle into the inside of the curve until it holds that position..



Boots: Take two thin pieces of black wool, very slightly larger than you used for the arms. Roll up halfway and shape into a round nosed boot leaving the other half of the wool soft.



Turn the gnome upside down and after positioning the boots to the front with the needled parts sticking out, use the soft wool to cover the bottom of the gnome and attach the boots. You may then need to work on the base and boots a little more until your gnome stands upright.



Nose: Take a few strands of white wool, roll into a ball and needle it closed.



Attach the nose in the centre of the face, working all around the edge of the nose. If you just attach through the centre it will flatten it and make it look pig-like.



Cheeks: Make two smaller balls and position one either side of the nose to form cheeks.



Mitts: Take a small piece of white wool, slightly more than you used for the nose, and needle this onto the end of the arm. Repeat for the other side.



Beard: Take a few strands of white wool for the beard. I've used grey so that you can see it more easily.



Fold the wool in half then begin needling the folded ends into the face in a half moon shape coming us as high as the middle of the cheeks.



Eyes: Pull off a tiny amount of black and rub it between your hands to form a small *soft* ball. Attach this to the head and repeat for the other eye.



Take a teeny tiny amount of white and needle it into the centre of the eye.



Eyebrows: Take just 3 or 4 strands of white wool and roll around the cocktail stick on one spot. This needs to be a narrow little sausage shape. Remove from the stick and needle into place in an arc above the eye. Repeat for the other eye.



Mouth: Make another small sausage shape using the cocktail stick. It needs to be slightly larger than the eyebrows. Needle into place under the nose making it curve down at each end.



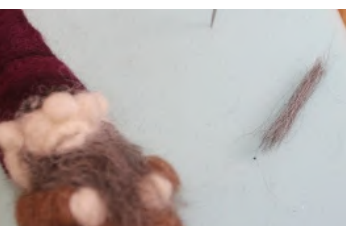
Make a second smaller sausage and needle into place below the upper lip.



Ears: Working with a further small amount of white fold it in half. Fold both ends partly towards the centre so that you have a kind of triangle shape. Needle around the edge to soften this off into a semi circle leaving the rest of the wool soft and unworked.



Use the soft wool to attach the ear. The top of the ear should line up with the centre of the eye.



Moustache: You can make this as small or large as you like. If the wool is too long you can cut it shorter. Needle into place between the nose and the upper lip..