

Adelaide Walker LLP

Fibres to inspire artists and makers

Tel: 01943 830600 Addingham, West Yorkshire, LS29 0PD

Email: enquiries@adelaidewalker.co.uk

www.adelaidewalker.co.uk

NOTE—The felting needles have special barbs on them that tangle the wool together as you work. These needles are very sharp and should be used with care, when not in use store in the container provided. The needle should leave the wool at the same angle as it entered, don't wiggle it around or it will break.



If you're making 2 snowmen, begin by splitting each piece of wool into 2 pieces along the length, so that you have some for each snowman. Then, take the larger piece of white, coarser feeling wool and remove a third (for the head and arms).



Body: Roll the larger piece up into a cylinder. The more tightly you roll the less needling you'll need to do and whatever you do don't let go or it'll unwind.



Keeping your needle steady and using a stabbing motion, needle the wool into a body shape. Flatten off the bottom and make sure it will stand up. It should feel firm but not hard.



Head: Remove a third of the wool from your smaller coarser white piece (for the arms). Roll the remainder into a ball and needle it until it's firm.



Join the head to the body by needling right through the head into the body. Needle from the body into the head as well, and keep going until the two pieces are firmly joined together. If you pick it up by the head it shouldn't feel as though it's going to come off.



Arms: Split your remaining coarse white wool into two pieces, one for each arm. Roll the piece up to form a sausage shape. Needle one end and the centre until firm. Keep turning it as you work so it stays in a sausage shape and isn't flattened.



Needle the soft end of the arm onto the body just where it joins the head. Needle the rest of the arm onto the body until it's firmly attached.



Once the arm is attached, you can improve the definition by needling into the join.



Scarf: Pull off an amount of the blue wool as shown and check that it is long enough to go around the neck with some hanging down front and back.



Needle the scarf around the snowman's neck. You can fold the ends of the blue wool in to form a squarer blunt end to the scarf if you wish



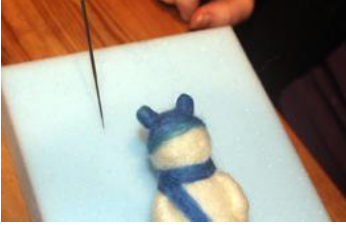
Hat: Take another strand of blue wool and wrap this around the head to form the bottom of the hat. Once you're happy with the position, needle this on.



Now add more blue wool until the top of the head is completely covered.



Jester's hat: Take a very small amount of blue wool and needle it into a tiny cylinder. Attach this to the top of the head to form one end of the jester's hat.



Repeat on the other side so the head looks like it has a couple of horns.



Take some more blue wool and wrap it around the bottom of the 'horns' to soften their outline and form the shape of the jester's hat.



Alternative nightcap hat: If you prefer the nightcap hat, wrap a small amount of blue wool tightly around the cocktail stick to form a cone shape, and then attach to the top of the head. Build up some more blue wool around it to form the shape.



Bobble: Using the softer white wool make a pea-size ball to form the bobble. Needle this on the mat until it's fairly firm. Keep turning it as you work so that it stays round.



Needle this into place on the top of the hat, and repeat on the other side if needed.



Mitts: Take a small piece of blue wool and needle this onto the end of the arm. Repeat for the other side.



Nose: Take a small piece of orange wool and needle this into a small cylinder or cone shape.



Attach the nose to the head in the centre of the face.



Eyes: Pull off a tiny amount of black and rub it between your hands to form a small soft ball. Attach this to the head, and repeat for the other eye.



Mouth: Take another tiny length of black wool and fold it over on itself until you have a narrow length of wool about 1 inch long.



Attach this to the head to form a nice smiley mouth.



Buttons: For each button take a small piece of black wool, slightly larger than you used for the eye. Roll this up in your hand and then needle into place on the front of the snowman. whilst it's still a soft ball. Don't let it get too hard before you attach it.

Don't worry if you have a little fibre left, you haven't done anything wrong, you should have a little more than you need.